

Current interests

PORT
CITY



Federal
Credit Union

July 2019

SERVING EMPLOYEES OF BRUNSWICK SINCE 1944, NOW SERVING
ALL OF MUSKEGON COUNTY TOO!

Lowest Rates in Town!

Convenient Terms &
Rates as Low as

2.49%
APR*

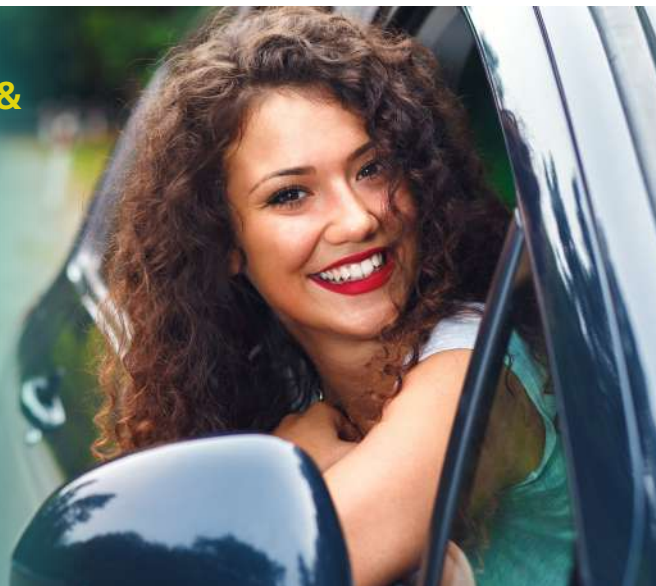
LOVE YOUR CAR?

You can love your auto loan, too!

Now that you've found a car featuring all the bells and whistles you've been wanting, be sure to stop by Port City FCU for an auto loan you'll love just as much, with the lowest rates in town!

Stop by the Credit Union or visit www.portcityfcu.com to learn more.

*APR = Annual Percentage Rate. Quoted rate is the lowest available rate. Your rate will be based on your credit history and may be higher. Rates and terms subject to change without notice.



Quarterly Quote

*"Always wear a smile
because you never know
who is watching..."*
- Gracie Gold



Holiday Closing

LABOR DAY
Monday, September 2

CHECK OUT OUR

Fresh-Picked MORTGAGE RATES AND TERMS!

10 Years	15 Years	20 Years	30 Years
3.50% APR*	3.75% APR*	4.25% APR*	4.50% APR*

No application or origination fees, no points. Auto transfer payment options, monthly, bi-weekly. No transferring of your mortgage to another lender.

*APR = Annual Percentage Rate. Rates shown in effect at time of printing, subject to change at any time. Rates are for purchase and no cash-out refinances only. Please call for rates on vacant land and cash-out refinances.



Port City Federal Credit Union
is on Facebook! "Like" us today!

NMLS ID# 402677



460 W. Laketon Ave.
(corner of Park and Laketon)
Muskegon, MI 49441

LOBBY HOURS

Monday - Friday 9am - 5pm

DRIVE UP HOURS

Monday - Thursday 9am - 5:30pm

Friday 8:30am - 5:30pm

NUMBERS

Phone 231 • 725 • 3312

Fax 231 • 725 • 4694

CU*TALK 800 • 860 • 5704

ROUTING & TRANSIT NUMBER

272483060

ONLINE

www.portcityfcu.com

E-mail

memberservices@portcityfcu.com

2nd Quarter 2019

Dividend Rates

	APR*	APY*
Shares	0.10%	0.10%
IRAs	0.70%	0.70%
Amazing Savings		
\$2,000-\$19,999		
.....	0.70%	0.70%
\$20,000-\$49,999		
.....	0.85%	0.85%
\$50,000+		
.....	1.00%	1.00%

*APR = Annual Percentage Rate.

APY = Annual Percentage Yield.

Dividends are based on Credit Union earnings and therefore cannot be stated in advance.



Congratulations, GRADUATES! YOU DID IT!

No matter how far from home college may take you, we make it easy for you to take us with you. From late-night cram sessions to last-minute snack runs, Port City Federal Credit Union has got you covered.



ONLINE & MOBILE APP CONVENIENCE

Stay on top of account activity, transfer money, and more through our convenient, mobile app! Use Remote Deposit Capture and save time depositing your checks anywhere through a secured Internet connection.

FREE ATM/DEBIT CARD

Enjoy simple convenience when shopping and dining, without the hassle of tracking cash.

VISA CREDIT CARD

Build your credit while being prepared for emergency expenses.

Stop by the Credit Union to see how we can support you throughout your entire college experience.

Congratulations to our 2019 College Scholarship Recipients

Summer Schultz
\$500.00 SmarTeen

Blake Kunish
\$500.00 Advanced

Shelbi Adams
\$500.00 Joseph R. Beyrle Memorial

